



21.5" FHD HDR PREMIUM BROADCAST MONITOR

KVM-2260W, a 21.5" FHD premium HDR broadcast monitors, integrated 3D LUT color calibration technology, selectable REC709, DCI-P3, Rec 2020 and User etc color spaces, supporting 3rd party LUT files import. It provides Waveform, Vectors, Pixel Measurement, Darkness Check and other features. HDR display supports PQ and HLG. KVM-2260W is suitable for high-end broadcasting, color grading and post production applications.



LCD Panel

Model No.	KVM-2260W
Backlight	LED
Size	21.5"
Resolution	1920x1080
Aspect Ratio	16 : 9
Viewing Angle	178°(H) / 178°(V)
Color Depth	16.7M
Brightness	300cd/m ²
Contrast Ratio	1000:1

Input

2 x BNC	SDI 1/2 signal inputs <i>(Auto-detected and compatible to 3G/HD/SD-SDI)</i>
3 x BNC	YPbPr/Video/Y/C inputs
1 x HDMI	HDMI input
1 x DVI-I	DVI/VGA inputs

Output

2 x BNC	SDI 1/2 signal outputs <i>(Auto-detected and compatible to 3G/HD/SD-SDI)</i>
3 x BNC	YPbPr/Video/Y/C outputs

Specifications

- 1920x1080 resolution, 8 Bit LCD panel
- 12 Bit Video Processing, Image no delay
- 3G-SDI 4:4:4 12bit signals (SMPTE 425M A/B)
- 2x2K/3G-SDI inputs and outputs(2K/3G/HD/SD-SDI auto detect)
- 1x DVI-I input, 1x HDMI input, 1x composite video input
- HDR supports PQ (ST2084) and HLG(1.0,1.1, 1.2, 1.3, 1.4, 1.5)
- Part Zoom In
- Darkness Check
- H/V Delay, Over Scan, Markers
- Audio Level Meter, Blue/Mono Only
- Remote control: Ethernet/GPI, RS422 In/Out
- Dynamic UMD(TSL3.1/4.0/5.0), Time Code Display
- LED Tally Light and On-screen Tally display

Main Body



- F-key configuration and Key Lock function
- Built-in AC in and DC in power supply
- 3D LUT Color calibration with ColourSpace & CalMAN
- Color space: REC709/EBU/DCI-P3 D65/DCI-P3/REC2020/ USER1/USER2/Bypass
- Support user 3D LUT files import
- Various Gamma selection: Gamma 2.0, 2.2, 2.4, 2.6
- EDTF Log Curves: Slog(SDR), Slog2(SDR), Slog3(SDR), Slog3(HDR)
- Waveform, Vectorscope for SDI1 and SDI2
- Waveform, Vectorscope for HDMI/DVI
- Pixel Measurement and Audio Phase
- PBP/PIP(size/position adjustable)
- Picture Flip, Focus Assist, False Color, Zebra

High Dynamic Range(HDR)

Konvision KUM 4K, BK and KVM-6K series support HDR display. Adjustable HDR modes include PQ(ST2084), HLG with Rec 2020 color gamut. It reproduces a greater dynamic range of luminosity and provides extremely high level picture quality.



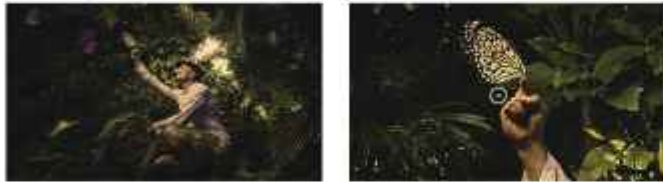
EO TF Curve Conversions

Konvision KUM 4K, BK and KVM-6K series supports a variety of EO TF curve conversion applicable to the broadcast industry and digital film standard. A preset of lots of camera logs and gamma curve selections, so as to realize the perfect combination with the camera system.



Part Zoom In

Part Zoom in function allows user Zoom In any part of the picture, to watch picture details more clearly, and assist for focus.



Darkness Check

Increasing the brightness and contrast ratio in the dark areas, Darkness Check can show more shadow details of the input signal. Darkness Check can be used for double checking the shadow detail of the dark areas to avoid any missing information.



PIP & PBP

It supports PIP and PBP for one SDI signal with the other signal (Video/Component/HDMI/ DVI/VGA). The two images can swap freely between each other.



Picture Flip

Horizontal picture flip function allows negative image, is very useful in the studios/virtual studios, such as weather forecast, news and other programs, etc.



Pixel Measurement

Select any single pixel or block of pixels by using a movable cross-hair to obtain real time readouts of the Y&RGB values of the selected position. This function is to get real time Y&RGB measurement values of any point of the input signals and compare the values of any two points.



3D LUT Color Calibration

Compatible with ColourSpace and Calman calibration software, Konvision monitors apply K10-A probe(professional level) to achieve a precise color. Monitor's also workable with universal colorimeters including CA210, CA310, CS200, CR100, CR250, X-Rite (1 Display).



3D LUT files import

With the LUT loading function, users can load 2 different 3D LUT files with different color types according to their own needs, making DIT, post production and grading work simpler and more intuitive, optimizing the work flow and improving work efficiency.



Waveform(Alarm), Vectors

Both SDI and HDMI support Waveform, Vectorscope, Histogram and manage to be displayed on screen at the same time. When luminance reaches or exceeds the preset value, the over exposure areas will be red marked(Waveform Alarm).



False Color

Check exposure of the image. Blue, cyan, green, yellow, orange and red color be displayed in turn to show the luminance or brightness values of the image from darkest to brightest, enables an achievement of proper exposure without applying external test equipment.



Focus Assist

Focus assist aids the camera operator in obtaining the sharpest possible picture, it will mark with red color where the sharp edges appear on the screen.



Zebra

Display the overexposed areas (too bright) of the image with zebra stripes, aids the camera operator to control the luminance, in order to avoid over-exposure. This feature is very effective for proper exposure.



Audio In & Out

SDI/HDMI Audio In 16 Channels SDI/2 Channels HDMI embedded audio

Audio Meter Display Vertical/Horizontal audio level meter display

Audio Headset Output 3.5mm headset jack

Built-in Speaker 2.5W x 2

GENERAL

Input Voltage DC 17V and AC 100-240V 50/60Hz

Power Consumption 30 W

Power Saving Mode Turn off unimportant key automatically if no signal input

VESA Installation VESA M15-D (100x100mm)

Accessory Power Card/Desktop stand

* Specifications may be changed without prior notice.